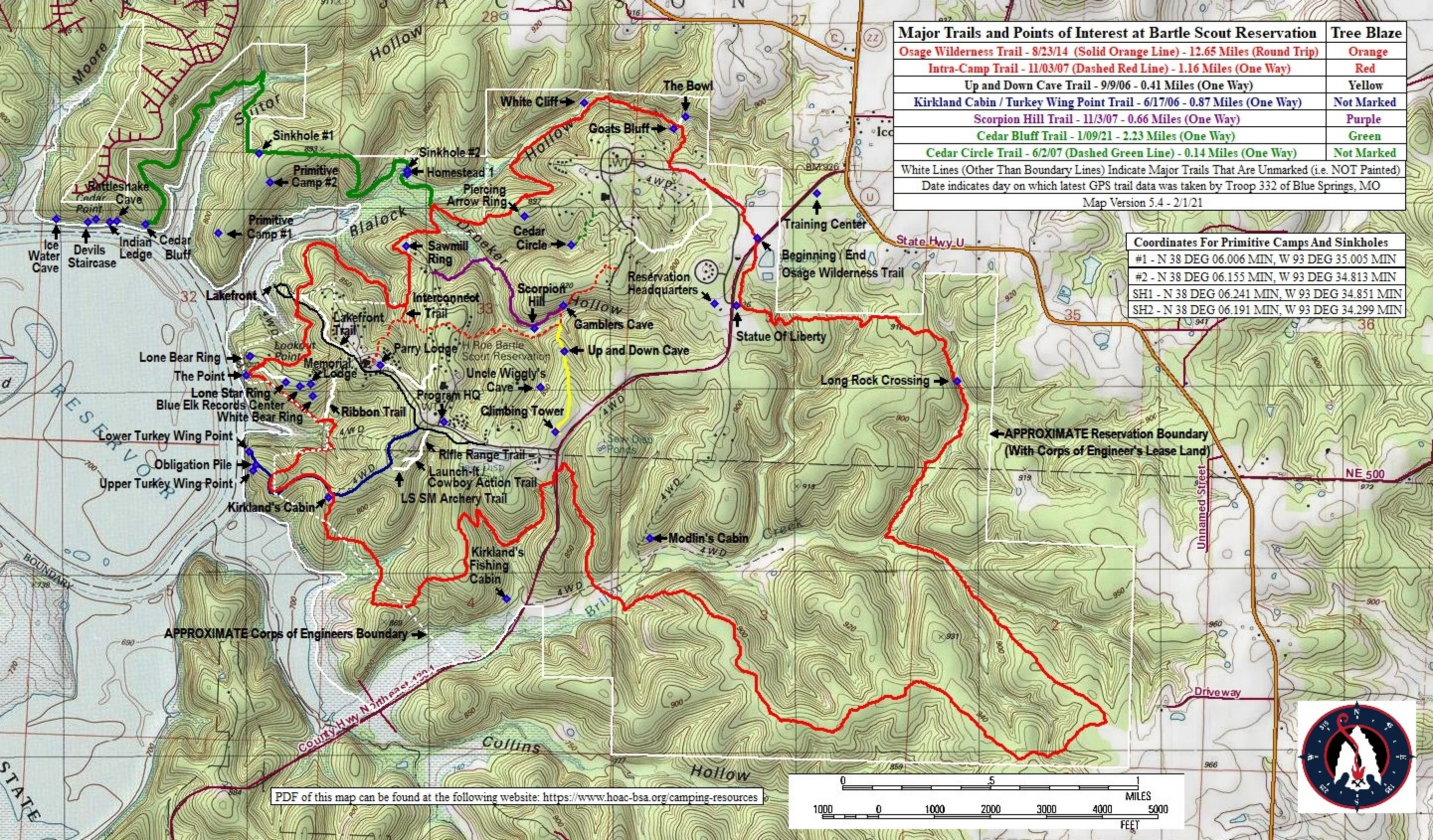


Major Trails and Points of Interest at Bartle Scout Reservation	Tree Blaze
Osage Wilderness Trail - 8/23/14 (Solid Orange Line) - 12.65 Miles (Round Trip)	Orange
Intra-Camp Trail - 11/03/07 (Dashed Red Line) - 1.16 Miles (One Way)	Red
Up and Down Cave Trail - 9/9/06 - 0.41 Miles (One Way)	Yellow
Kirkland Cabin / Turkey Wing Point Trail - 6/17/06 - 0.87 Miles (One Way)	Not Marked
Scorpion Hill Trail - 11/3/07 - 0.66 Miles (One Way)	Purple
Cedar Bluff Trail - 1/09/21 - 2.23 Miles (One Way)	Green
Cedar Circle Trail - 6/2/07 (Dashed Green Line) - 0.14 Miles (One Way)	Not Marked
White Lines (Other Than Boundary Lines) Indicate Major Trails That Are Unmarked (i.e. NOT Painted)	
Date indicates day on which latest GPS trail data was taken by Troop 332 of Blue Springs, MO	
Map Version 5.4 - 2/1/21	

Coordinates For Primitive Camps And Sinkholes
#1 - N 38 DEG 06.006 MIN, W 93 DEG 35.005 MIN
#2 - N 38 DEG 06.155 MIN, W 93 DEG 34.813 MIN
SH1 - N 38 DEG 06.241 MIN, W 93 DEG 34.851 MIN
SH2 - N 38 DEG 06.191 MIN, W 93 DEG 34.299 MIN



PDF of this map can be found at the following website: <https://www.hoac-bsa.org/camping-resources>

